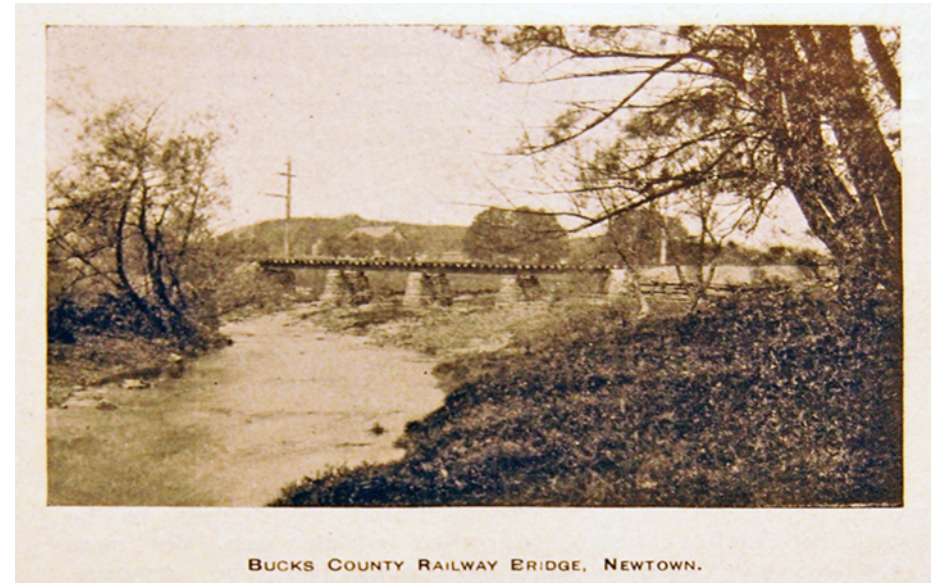
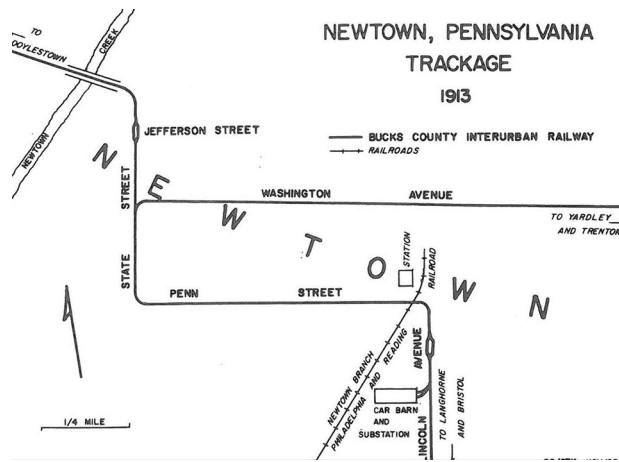


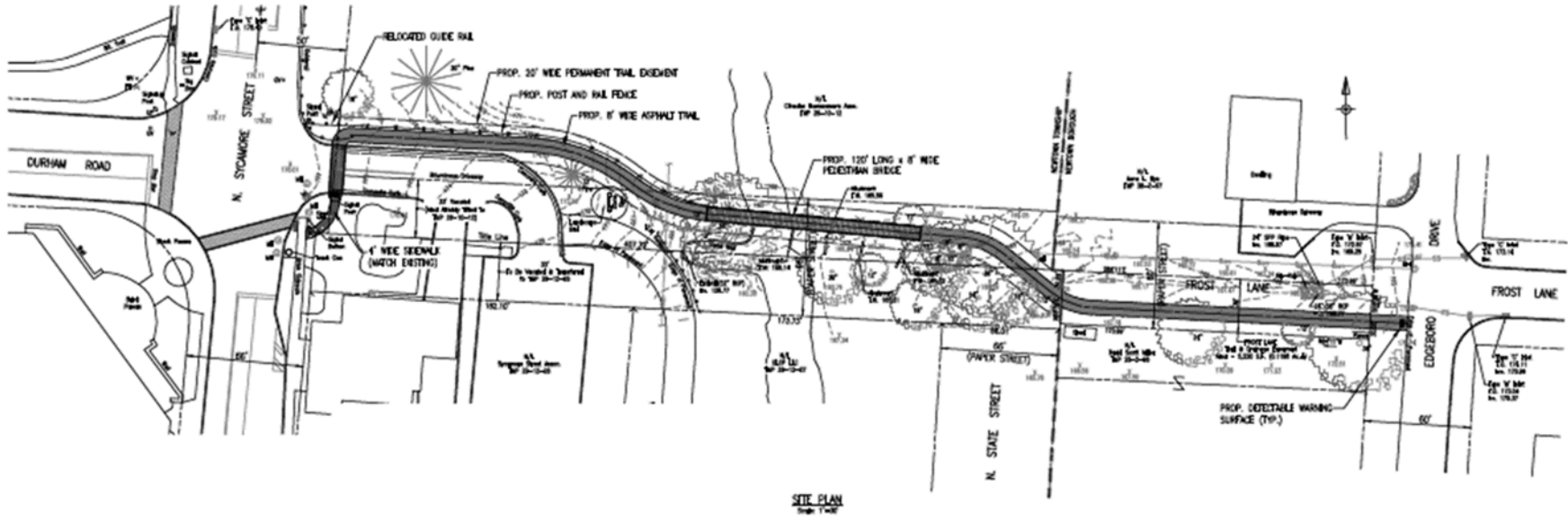
The Newtown Creek Pedestrian Bridge will be built on the site of the Old Newtown Trolley Bridge



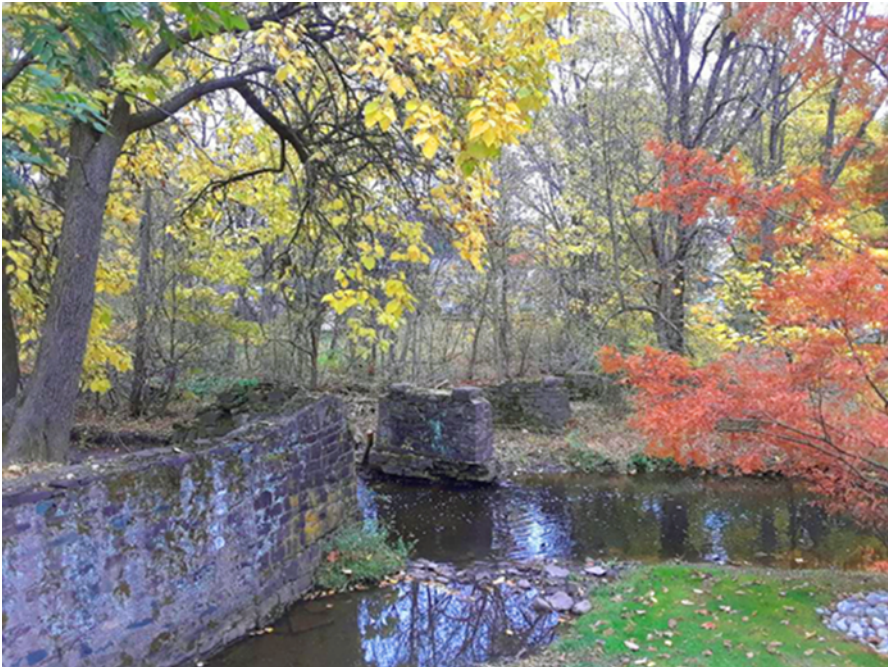
The trolley line ran between Bristol and Doylestown until 1923



The foundations of the original trolley bridge today



The bridge would be approximately 120 ft. long and 8 ft. wide, with paved approaches on both sides



Example of a pedestrian bridge to be built next to the foundations of the old bridge